

Product Monograph

APO- SULFATRIM

sulfamethoxazole and trimethoprim tablets USP 400/80 mg

APO- SULFATRIM DS

sulfamethoxazole and trimethoprim tablets USP 800/160 mg

APO- SULFATRIM PEDIATRIC

sulfamethoxazole and trimethoprim tablets USP 100/20 mg

APO- SULFATRIM ORAL SUSPENSION

sulfamethoxazole and trimethoprim oral suspension USP 40/ 8 mg / 5 ml

Antibacterial Agent

**Apotex Inc.
150 Signet Drive
Toronto, Ontario
M9L 1T9
Control No.: 172885**

DATE OF PREPARATION:

October 29, 1979

DATE OF REVISION:

May 28, 2014

PRODUCT MONOGRAPH

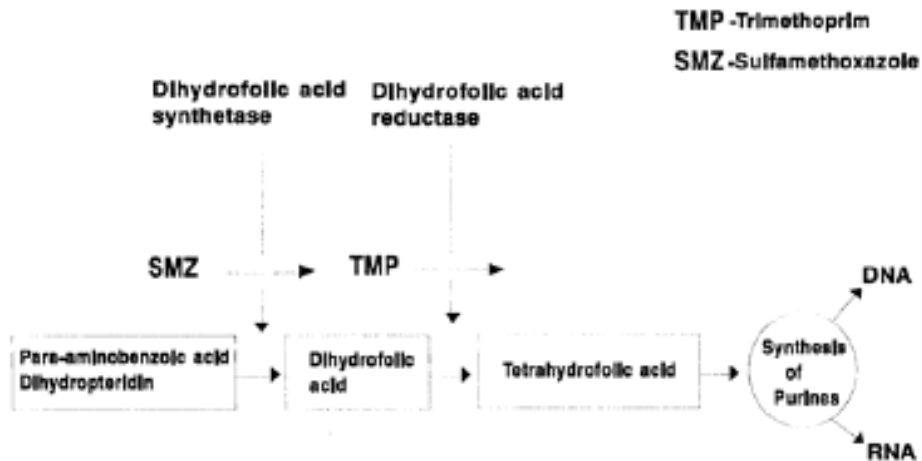
APO-SULFATRIM DS, SULFAMETHOXAZOLE AND TRIMETHOPRIM TABLETS USP 800/160 MG
 APO-SULFATRIM, SULFAMETHOXAZOLE AND TRIMETHOPRIM TABLETS USP 400/80 MG
 APO-SULFATRIM PEDIATRIC, SULFAMETHOXAZOLE AND TRIMETHOPRIM TABLETS USP 100/20 MG
 APO-SULFATRIM SUSPENSION, SULFAMETHOXAZOLE AND TRIMETHOPRIM ORAL SUSPENSION USP
 40/ 8 MG / 5 ML

ANTIBACTERIAL AGENT

CLINICAL PHARMACOLOGY

APO-SULFATRIM (sulfamethoxazole and trimethoprim) is an antibacterial agent with a wide spectrum of activity. It contains two active antibacterial components, sulfamethoxazole and trimethoprim, which act synergistically on many species of bacteria.

Figure 1



Sulfamethoxazole and trimethoprim act sequentially in two successive steps in the biosynthesis of nucleic acids. Trimethoprim is an inhibitor of dihydrofolate reductase, the enzyme which reduces dihydrofolic acid to its tetrahydro form. This biochemical step is essential in the production of the folate coenzymes which are involved in the biosynthesis of thymine, purine, serine and methionine. Sulfamethoxazole exerts its antibacterial activity by competing with para-aminobenzoic acid.

Most pathogenic bacteria meet their need for dihydrofolic acid by synthesizing it from para-aminobenzoic acid, pteridine and glutamic acid. Animals, in contrast, depend on exogenous sources for their needs of folic acid and do not rely upon intracellular synthesis.

Under usual circumstances, sulfamethoxazole or trimethoprim acting alone do not produce complete block in this biosynthesis of nucleic acids. Instead, they cause sufficient reduction in the synthesis of folate coenzymes to produce bacteriostasis. When the two agents act together, the superimposition of their effects produces a complete block in the synthesis, leading to death of the organism. Thus the effect of the dual action is to reduce the minimum inhibitory concentrations (MIC) of each agent (synergism) and to convert a bacteriostatic action to a bactericidal action.

The activity of APO-SULFATRIM therefore depends upon the ability of both sulfamethoxazole and trimethoprim to affect the folate metabolism of the bacterium; however, for APO-SULFATRIM to be therapeutic it must not affect the folate metabolism of the host. Since sulfamethoxazole affects only the *de novo* synthesis of dihydrofolic acid by bacteria, it does not affect folate metabolism of animals. Since in animals, as in bacteria, the folates have to be recycled to the active form by dihydrofolate reductase, trimethoprim could be expected to affect mammalian folate metabolism. Trimethoprim, however, was especially selected from similar folate inhibitors

because of its low toxicity for animals and high toxicity for bacteria. This difference has since been shown to be due to the fact that the affinity of trimethoprim for the dihydrofolate reductase of bacteria is some 40,000 times greater than for the corresponding mammalian enzyme.

INDICATIONS AND CLINICAL USE

APO-SULFATRIM (sulfamethoxazole and trimethoprim) has been effective in the treatment of infections associated with the following gram-positive and gram-negative organisms:

Gram-Negative Organisms

Haemophilus influenzae

Neisseria gonorrhoeae

Escherichia coli

Klebsiella species

Enterobacter (Aerobacter) aerogenes

Proteus mirabilis

Proteus vulgaris

Salmonella species

Shigella species

Vibrio cholerae

Gram-Positive Organisms

Streptococcus pyogenes

Streptococcus viridans

Staphylococcus albus

Staphylococcus aureus

Diplococcus pneumoniae

Other Organisms

Brucella melitensis

Nocardia asteroides

Nocardia brasiliensis

Paracoccidioides brasiliensis

Pneumocystis jiroveci

Streptomyces somaliensis

Sensitivity tests should be performed wherever possible to determine choice of therapy. These tests should be repeated if there is a failure to respond, relapse or early recurrence.

APO-SULFATRIM may be indicated for the following infections when caused by susceptible strains of the above organisms.

Urinary Tract Infections:

Treatment of acute uncomplicated urinary tract infections*. It is recommended that initial episodes of uncomplicated urinary tract infections be treated with a single effective antibacterial agent rather than the combination.

Upper and Lower Respiratory Tract Infections:

Treatment of acute exacerbations of chronic bronchitis.

Treatment of *Pneumocystis jiroveci* pneumonia*. APO-SULFATRIM is also indicated in the treatment of infants and children with a diagnosis of *Pneumocystis jiroveci* pneumonitis, especially if they are immunosuppressed.

Gastrointestinal Tract Infections:

Treatment of cholera, as an adjunct to fluid and electrolyte replacement, when the organism has been shown to be sensitive *in vitro*.

Treatment of bacillary dysentery*.

Other Infections:

Treatment of nocardiosis*. - Brucellosis (second line therapy), when used in combination with gentamicin or rifampicin.

APO-SULFATRIM is not indicated in infections associated with *Pseudomonas*, *Mycoplasma*, nor when the infection is caused by a virus.

This drug has not yet been fully evaluated in streptococcal infections. APO-SULFATRIM has been investigated clinically in these indications.

CONTRAINDICATIONS

APO-SULFATRIM (sulfamethoxazole and trimethoprim) is contraindicated in patients with a known hypersensitivity, including a history of drug-induced immune thrombocytopenia, in

association with trimethoprim or sulfonamides, co-trimoxazole or any excipients of APO-SULFATRIM and in patients with documented megaloblastic anemia due to folate deficiency, evidence of marked liver parenchymal damage, or blood dyscrasias.

APO-SULFATRIM is contraindicated in patients with marked renal impairment where repeated serum assays cannot be carried out (see also PRECAUTIONS).

APO-SULFATRIM is contraindicated in pregnant patients and in nursing mothers, because sulfonamides pass the placenta and are excreted in the milk and may cause kernicterus.

APO-SULFATRIM is contraindicated in infants less than two months of age.

WARNINGS

Fatalities associated with the administration of sulfonamides and APO-SULFATRIM although rare, have occurred due to severe reactions, including Stevens-Johnson syndrome, toxic epidermal necrolysis (Lyell's syndrome), fulminant hepatic necrosis, agranulocytosis, aplastic anemia, other blood dyscrasias, and hypersensitivity of the respiratory tract.

APO-SULFATRIM (sulfamethoxazole and trimethoprim) should be discontinued at the first appearance of skin rash or any sign of adverse reaction. Clinical signs, such as rash, sore throat, fever, arthralgia, cough, shortness of breath, pallor, purpura, or jaundice may be early indications of serious reactions. Cough, shortness of breath, and/or pulmonary infiltrates may be indicators of pulmonary hypersensitivity to sulfonamides which while rare, has been fatal. In rare instances a skin rash may be followed by more severe reactions, such as Stevens-Johnson

syndrome, toxic epidermal necrolysis, hepatic necrosis, or serious blood disorder. Complete blood counts should be done frequently in patients receiving sulfonamides.

APO-SULFATRIM should not be used in the treatment of streptococcal pharyngitis. Clinical studies have documented that patients with group A β -hemolytic streptococcal tonsillopharyngitis have a greater incidence of bacteriologic failure when treated with APO-SULFATRIM than to those patients treated with penicillin, as evidenced by failure to eradicate this organism from the tonsillopharyngeal area.

Rare life-threatening and fatal cases of immune thrombocytopenia have been reported with the use of sulfamethoxazole-trimethoprim.

PRECAUTIONS

General

APO-SULFATRIM should only be used where, in the judgement of the physician, the benefit of treatment outweighs any possible risks; consideration should be given to the use of a single effective antibacterial agent.

Clinicians should be aware that first line therapy in the management of all patients with diarrheal disease in the maintenance of adequate hydration.

APO-SULFATRIM should be given with caution to patients with impaired renal or hepatic function, to those with possible folate deficiency (e.g., the elderly, chronic alcoholics, rheumatoid arthritis, patients receiving anticonvulsant therapy, patients with malabsorption syndrome, and patients in malnutrition states), and to those with severe allergy or bronchial asthma. Because of

possible interference with folate metabolism, regular blood counts are advisable in these patients as well as patients who are on long term therapy. Changes indicative of folic acid impairment have, in certain specific situations, been reversed by folinic acid therapy.

A folate supplement should also be considered with prolonged high dosage of APO-SULFATRIM (see Adverse Reactions).

In glucose-6-phosphate dehydrogenase-deficient individuals, hemolysis may occur. This reaction is frequently dose-related.

The administration of APO-SULFATRIM to patients known or suspected to be at risk of acute porphyria should be avoided. Both trimethoprim and sulfonamides (although not specifically sulfamethoxazole) have been associated with clinical exacerbation of porphyria.

Caution should be exercised in administering trimethoprim to patients at risk of hyperkalemia and hyponatremia. Serum potassium and sodium and renal function should be closely monitored, and dosage should be adjusted for renal function (see Precautions, Renal Impairment and Dosage and Administration).

The risk factors for hyperkalemia are high trimethoprim dosage (20 mg/kg/day), renal insufficiency (serum creatinine \geq 1.2 mg/dl), hypoaldosteronism, older age, dietary potassium and other drugs that impair potassium excretion. The likely mechanism is via trimethoprim inhibition of sodium channels in the distal nephron, similar to that of the potassium-sparing diuretic amiloride.

Hyperkalemia is generally reversible on discontinuation of trimethoprim. In patients presented with hyperkalemia due to APO-SULFATRIM, APO-SULFATRIM can be discontinued and appropriate standard potassium-lowering therapy instituted.

Except under careful supervision trimethoprim-sulfamethoxazole should not be given to patients with serious hematological disorders (See Adverse Reactions).

Functional inhibition of the renal tubular secretion of creatinine may produce a spurious fall in the estimated rate of creatinine clearance.

APO-SULFATRIM may affect the results of thyroid function tests but this is probably of little or no clinical significance.

The possibility of superinfection with a non-sensitive organism should be borne in mind.

An adequate urinary output should be maintained at all times. Evidence of crystalluria in vivo is rare, although sulfonamide crystals have been noted in cooled urine from treated patients. In patients suffering from hypoalbuminaemia the risk may be increased.

Renal Impairment

In patients with renal impairment, a reduced or less frequent dosage is recommended in order to avoid accumulation of trimethoprim in the blood (see Dosage and Administration). Non-ionic diffusion is the main factor in the renal handling of trimethoprim, and as renal failure advances, trimethoprim excretion decreases. For such patients, serum assays are necessary. APO-SULFATRIM should not be used when the serum creatinine level is above 2 mg per 100 mL, in order to avoid possible permanent impairment of renal function.

Use in the Elderly

There may be an increased risk of severe adverse reactions in elderly patients, particularly when complicating conditions exist, e.g., impaired kidney and/or liver function, or concomitant use of other drugs. Severe skin reactions, or generalized bone marrow suppression (see WARNINGS and Adverse Reactions), or a specific decrease in platelets (with or without purpura) are the most frequently reported severe adverse reactions in elderly patients. In those concurrently receiving certain diuretics, primarily thiazides, an increased incidence of thrombocytopenia with or without purpura has been reported. Appropriate dosage adjustments should be made for patients with impaired kidney function (see Dosage and Administration).

Close supervision is recommended when APO-SULFATRIM is used in elderly patients or in patients taking high doses of APO-SULFATRIM as these patients may be more susceptible to hyperkalemia and hyponatremia. Special care should be exercised when treating the elderly or suspected folate-deficient patients; folate supplementation should be considered.

Use in Children

APO-SULFATRIM is not recommended for pediatric patients younger than 2 months of age (see CONTRAINDICATIONS).

Use in Pregnancy

Trimethoprim and sulfamethoxazole cross the placenta and their safety in human pregnancy has not been established. Trimethoprim is a folate antagonist and, in animal studies, both agents have been shown to cause fetal abnormalities. At doses in excess of the recommended human

therapeutic dose, trimethoprim and sulfamethoxazole have been reported to cause cleft palate and other fetal abnormalities in rats, findings typical of a folate antagonist. Effects with trimethoprim were preventable by administration of dietary folate. In rabbits, fetal loss was seen at doses of trimethoprim in excess of human therapeutic doses. Case-control studies have shown that there may be an association between exposure to folate antagonists and birth defects in humans. Therefore, APO-SULFATRIM should be avoided in pregnancy, particularly in the first trimester, unless the potential benefit to the mother outweighs the potential risk to the fetus; folate supplementation should be considered if APO-SULFATRIM is used in pregnancy.

Sulfamethoxazole competes with bilirubin for binding to plasma albumin. As significant maternally derived drug levels persist for several days in the newborn, there may be a risk of precipitating or exacerbating neonatal hyperbilirubinaemia, with an associated theoretical risk of kernicterus, when APO-SULFATRIM is administered to the mother near the time of delivery. This theoretical risk is particularly relevant in infants at increased risk of hyperbilirubinaemia, such as those who are preterm and those with glucose-6-phosphate dehydrogenase deficiency.

Use in Nursing Mothers

Trimethoprim and sulfamethoxazole are excreted in breast milk. Administration of APO-SULFATRIM should be avoided in late pregnancy and in lactating mothers where the mother or infant has, or is at particular risk of developing hyperbilirubinaemia. Additionally, administration of APO-SULFATRIM should be avoided in infants younger than eight weeks in view of predisposition of young infants to hyperbilirubinaemia.

Patients with Special Diseases and Conditions

Use in the Treatment of and Prophylaxis for Pneumocystis jiroveci Pneumonia in Patients with Acquired Immunodeficiency Syndrome (AIDS):

The incidence of side effects, particularly rash, severe hypersensitivity reactions, fever, leukopenia, neutropenia, thrombocytopenia and elevated aminotransferase (transaminase) values in AIDS patients who are being treated with APO-SULFATRIM for Pneumocystis jiroveci pneumonia (PJP) has been reported to be greatly increased compared with the incidence normally associated with the use of APO-SULFATRIM in non-AIDS patients. If signs of bone marrow depression occur, the patient should be given calcium folinate supplementation (5-10 mg/day). The incidence of hyperkalemia and hyponatremia appears to be increased in AIDS patients receiving APO-SULFATRIM. Adverse effects are generally less severe in patients receiving APO-SULFATRIM for prophylaxis. A history of mild intolerance to APO-SULFATRIM in AIDS patients does not appear to predict intolerance of subsequent secondary prophylaxis. However, if a patient develops skin rash or any sign of adverse reaction, therapy with APO-SULFATRIM should be re-evaluated (see WARNINGS). Rhabdomyolysis has been reported in HIV positive patients receiving trimethoprim-sulfamethoxazole for prophylaxis or treatment of PJP. In some cases, rhabdomyolysis led to acute renal failure requiring emergency dialysis.

Severe hypersensitivity reactions have also been reported in HIV-infected patients on re-exposure to APO-SULFATRIM, sometimes after a dosage interval of a few days.

The concomitant use of leucovorin with APO-SULFATRIM for the acute treatment of Pneumocystis jiroveci pneumonia in patients with HIV infection was associated with increased rates of treatment failure and morbidity in a placebo-controlled study.

Phenylketonuric Patients

Trimethoprim has been noted to impair phenylalanine metabolism but this is of no significance in phenylketonuric patients on appropriate dietary restriction.

Drug-Food Interactions

Caution should be exercised in patients following potassium enriched dietary regimens.

Drug-Drug Interactions

In elderly patients concurrently receiving certain diuretics, primarily thiazides, an increased incidence of thrombocytopenia with or without purpura has been reported.

Occasional reports suggest that patients receiving pyrimethamine at doses in excess of 25 mg weekly may develop megaloblastic anemia should APO-SULFATRIM be prescribed concurrently.

In some situations, concomitant treatment with zidovudine may increase risk of hematological adverse reactions to APO-SULFATRIM. If concomitant treatment is necessary, consideration should be given to monitoring of hematological parameters.

Administration of APO-SULFATRIM 160 mg/800 mg causes a 40% increase in lamivudine exposure because of the trimethoprim component. Lamivudine has no effect on the pharmacokinetics of trimethoprim or sulfamethoxazole.

It has been reported that APO-SULFATRIM may prolong the prothrombin time in patients who are receiving the anticoagulant warfarin. This interaction should be kept in mind when APO-

SULFATRIM is given to patients already on anticoagulant therapy, and the coagulation time should be reassessed.

APO-SULFATRIM may inhibit the hepatic metabolism of phenytoin. APO-SULFATRIM, given at a common clinical dosage, increased the phenytoin half-life by 39% and decreased the phenytoin metabolic clearance rate by 27%. When administering these drugs concurrently, one should be alert for possible excessive phenytoin effect. Close monitoring of the patient's condition and serum phenytoin levels is advisable.

Sulfonamides can also displace methotrexate from plasma protein binding sites, thus increasing free methotrexate concentrations. Folate supplementation should be considered.

If APO-SULFATRIM is considered appropriate therapy in patients receiving other anti-folate drugs, a folate supplementation should be considered.

Concomitant use of trimethoprim with digoxin has been shown to increase plasma digoxin levels in a proportion of elderly patients.

Caution should be exercised in patients taking any other drugs that can cause hyperkalemia.

Reversible deterioration in renal function has been observed in patients treated with APO-SULFATRIM and cyclosporin following renal transplantation. When trimethoprim is administered simultaneously with drugs that form cations at physiological pH, and are also partly excreted by active renal secretion (e.g. procainamide, amantadine), there is the possibility of competitive inhibition of this process which may lead to an increase in plasma concentration of one or both of the drugs.

Interaction with sulphonylurea hypoglycemic agents is uncommon but potentiation has been reported.

Concurrent use of rifampicin and APO-SULFATRIM results in a shortening of the plasma half life of trimethoprim after a period of about one week. This is not thought to be of clinical significance.

Trimethoprim is an inhibitor of cytochrome P450 2C8 enzyme and may interact with other drugs that are primarily metabolized by the 2C8 isoform. Sulfamethoxazole is an inhibitor of cytochrome P450 2C9 and may interact with other drugs that are primarily metabolized by the 2C9 isoform.

Laboratory Tests

Drug/Laboratory Test Interactions

APO-SULFATRIM, specifically the trimethoprim component, can interfere with a serum methotrexate assay as determined by the competitive binding protein technique (CBPA) when a bacterial dihydrofolate reductase is used as the binding protein. No interference occurs, however, if methotrexate is measured by a radioimmunoassay (RIA).

The presence of trimethoprim and sulfamethoxazole may also interfere with the Jaffé alkaline picrate reaction assay for creatinine, resulting in overestimations of about 10% in the range of normal values.

Information for Patients

Patients should be instructed to maintain an adequate fluid intake in order to prevent crystalluria and stone formation. Patients should tell their physician of all dietary regimens and supplements.

Adverse Reactions

The most common adverse effects are hyperkalemia, anorexia, monilial overgrowth, headache, gastrointestinal disturbances (nausea, vomiting, diarrhea) and allergic skin reactions (such as rash and urticaria). FATALITIES ASSOCIATED WITH THE ADMINISTRATION OF SULFONAMIDES AND APO-SULFATRIM ALTHOUGH RARE, HAVE OCCURRED DUE TO SEVERE REACTIONS, INCLUDING STEVENS-JOHNSON SYNDROME, TOXIC EPIDERMAL NECROLYSIS (LYELL'S SYNDROME), FULMINANT HEPATIC NECROSIS, AGRANULOCYTOSIS, APLASTIC ANEMIA, OTHER BLOOD DYSCRASIAS, AND HYPERSENSITIVITY OF THE RESPIRATORY TRACT (SEE WARNINGS).

Hematologic

Leukopenia, neutropenia, thrombocytopenia, megaloblastic anaemia, aplastic and hemolytic anemia, methemoglobinemia, purpura, agranulocytosis, hypoprothrombinemia, eosinophilia, haemolysis in certain susceptible G-6-PD deficient patients and bone marrow depression.

Allergic

Stevens-Johnson syndrome, toxic epidermal necrolysis (Lyell's syndrome), anaphylaxis, allergic myocarditis, erythema multiforme, toxicoderma, exfoliative dermatitis, angioedema, drug fever, chills, allergic vasculitis resembling Henoch-Schönlein purpura, serum sickness, serum sickness-like syndrome, generalized allergic reactions, generalized skin eruptions, fixed drug eruption, photosensitivity, conjunctival and scleral injection, pruritus, urticaria, and rash. In addition, periarteritis nodosa and systemic lupus erythematosus and anaphylactoid reactions (sweating and collapse) have been reported.

Cardiovascular

QT prolongation

Hepatobiliary

Hepatitis, including cholestatic jaundice and hepatic necrosis, jaundice, elevation of serum transaminase, alkaline phosphatase and bilirubin. Hepatic changes including fatalities have been recorded in at-risk patients. Cholestatic jaundice and hepatic necrosis may be fatal.

Gastrointestinal

Pseudomembranous enterocolitis, pancreatitis, stomatitis, glossitis, dry mouth, nausea, vomiting, pyrosis, gastric intolerance, gastritis or gastroenteritis, dyspepsia emesis, abdominal pain, constipation, flatulence, diarrhea.

Genitourinary

Impaired renal function (sometimes reported as renal failure), interstitial nephritis, kidney changes (as indicated by abnormal elevations in blood urea nitrogen, blood non-protein nitrogen, serum creatinine and urine protein levels), toxic nephrosis with oliguria and anuria, crystalluria, hematuria, urgency, and dysuria.

Metabolic

Anorexia, hyperkalemia, hyponatremia, hypoglycemia (see also PRECAUTIONS).

Neurologic

Aseptic meningitis, convulsions, peripheral neuritis, ataxia, tremor, vertigo, tinnitus, headache.

Aseptic meningitis was rapidly reversible on withdrawal of the drug, but recurred in a number of cases on re-exposure to either APO-SULFATRIM or to trimethoprim alone.

Psychiatric

Hallucinations, depression, apathy, nervousness, dizziness.

Endocrine

The sulfonamides bear certain chemical similarities to some goitrogens, diuretics (acetazolamide and the thiazides), and oral hypoglycemic agents. Cross-sensitivity may exist with these agents. Diuresis and hypoglycemia have occurred rarely in patients receiving sulfonamides.

Musculoskeletal

Arthralgia, rhabdomyolysis and myalgia.

Respiratory System

Pulmonary infiltrates, cough, shortness of breath, dyspnea.

Miscellaneous

Weakness, fatigue, insomnia, vision troubles, alopecia, epistaxis, edema. Monilial overgrowth is common.

SYMPTOMS AND TREATMENT OF OVERDOSAGE

For management of a suspected drug overdose, contact your regional Poison Control Centre.

Acute

The amount of a single dose of APO-SULFATRIM (sulfamethoxazole and trimethoprim) that is either associated with symptoms of overdose or is likely to be life-threatening has not been reported. Signs and symptoms of overdose reported with sulfonamides include anorexia, colic, nausea, vomiting, dizziness, headache, drowsiness, and unconsciousness. Pyrexia, hematuria, and crystalluria may be noted. Blood dyscrasias and jaundice are potential late manifestations of overdose. Signs of acute overdose with trimethoprim include nausea, vomiting, dizziness, headache, mental depression, confusion, and bone marrow depression.

General principles of treatment include the forcing oral fluids; and the administration of intravenous fluids if urine output is low and renal function is normal. Acidification of the urine will increase renal elimination of trimethoprim. Inducing diuresis plus alkalinisation of urine will enhance the elimination of sulfamethoxazole. Alkalinisation will reduce the rate of elimination of trimethoprim. The patient should be monitored with blood counts and appropriate blood chemistries, including electrolytes. If a significant blood dyscrasia or jaundice occurs, specific

therapy should be instituted for these complications. Peritoneal dialysis is not effective and hemodialysis is only moderately effective in eliminating trimethoprim and sulfamethoxazole.

There is no known antidote for sulfonamide poisoning; however, calcium folinate (leucovorin), 3 to 6 mg I.M. for 5 to 7 days, is an effective antidote for adverse effects in the hemopoietic system caused by trimethoprim.

Chronic

Use of APO-SULFATRIM at high doses and/or for extended periods of time may cause confusion and bone marrow depression manifested as thrombocytopenia, leukopenia, and/or megaloblastic anemia. If signs of bone marrow depression occur, the patient should be given leucovorin; 5 to 15 mg leucovorin daily has been recommended by some investigators.

DOSAGE AND ADMINISTRATION

INDICATION	DOSAGE*		DURATION OF THERAPY
	Adults & Children over 12 years # of tablets	Children under 12 years mg/kg	
Bacterial Infections	2 Apo-Sulfatrim tablets or 1 Apo-Sulfatrim DS tablet b.i.d.	15 mg SMZ/kg & 3 mg TMP/kg b.i.d.	At least 5 days or until patient is asymptomatic for 48 hours.
Severe Bacterial Infections	3 Apo-Sulfatrim tablets or 1 1/2 Apo-Sulfatrim DS tablet b.i.d.		Urinary infections until the urine becomes sterile.
Prophylaxis and Salmonella Carriers	1 Apo-Sulfatrim tablet or 1/2 Apo-Sulfatrim DS tablet b.i.d.		Acute Salmonellosis: at least 7 days after defervescence. Salmonella Carriers: until repeated stool cultures are negative
Uncomplicated Gonorrhoea	2 Apo-Sulfatrim tablets or 1 Apo-Sulfatrim DS tablet q.i.d.		two days.
Pneumocystis Carinii	25 mg SMZ/kg & 5 mg TMP/kg		at least 14 days.

Pneumonitis	q.i.d.	
* SMZ = sulfamethoxazole TMP = trimethoprim		

For Patients with Impaired Renal Function:

When renal function is impaired, a reduced dosage should be employed using the following table:

Creatinine Clearance (mL/s)	Recommended Dose Regimen
Above 0.5 (30 mL/min.) 0.25-0.5 (15-30 mL/min.) Below 0.25 (15 mL/min.)	Usual standard regimen 1/2 the usual regimen Use not recommended

When only serum creatinine levels are known, the following formulae may be used to estimate creatinine clearance. The serum creatinine must represent a steady state of renal function:

Males: Creatinine clearance (mL/s)=	$\text{Weight (kg)} \times (140 - \text{age}) / 49 \times \text{serum creatinine (umol/L)}$
Or Creatinine clearance (mL/min.)=	$\text{Weight (kg)} \times (140 - \text{age}) / 72 \times \text{serum creatinine (mg/dL)}$
Females	85 x above value.

Serious Systemic Infections

Children:

The recommended daily dosage for children is 5 to 10 mg trimethoprim/kg body weight/day and 25 to 50 mg sulfamethoxazole/kg body weight/day. Treatment should be continued until the patient has been symptom free for two days; the majority will require treatment for at least five days.

Other diseases, including certain tropical diseases rarely seen in Canada have also been successfully treated with APO-SULFATRIM. The duration of treatment is as follows:

Disease	Duration
Cholera	7 days
Nocardiosis	12 weeks
Brucellosis	2 weeks to 3 months

Pneumocystis jiroveci Pneumonitis

Children and Adults

Therapy should be continued for a total treatment period of at least two weeks. The aim is to obtain peak plasma or serum levels of trimethoprim of greater than or equal to 5 micrograms/mL (see Adverse Reactions)

Pharmaceutical Information

Drug Substance

The active ingredients of APO-SULFATRIM are a combination of trimethoprim and sulfamethoxazole which has been established in a ratio of 1:5.

Proper Name: Sulfamethoxazole

Chemical Name: N1-(5 - methyl - 3 - isoxazolyl) sulfanilamide

Structural Formula:



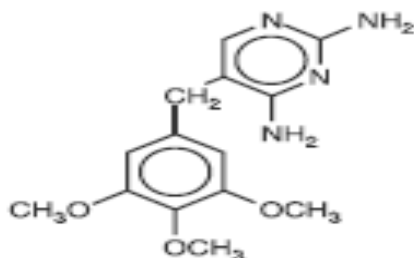
Molecular Formula: C₁₀H₁₁N₃O₃S

Molecular Weight: 253.31

Description: Sulfamethoxazole is a white to off-white, practically odourless, crystalline compound. It has a melting point of 167°C.

Proper Name: Trimethoprim

Chemical Name: 2,4 - diamino - 5 - (3,4,5 - trimethoxybenzyl) pimidine

Structural Formula:Molecular Formula: C₁₄H₁₈N₄O₃Molecular Weight: 290.32

Description: Trimethoprim is a white to cream, bitter crystalline powder. It has a melting point of 199-203°C and a solubility in water of 0.4 mg/mL.

Composition

Each APO-SULFATRIM Tablet contains sulfamethoxazole , trimethoprim, and the following non-medicinal ingredients: methylcellulose, croscarmellose sodium, magnesium stearate, and colloidal silicon dioxide.

Each dose of APO-SULFATRIM Paediatric Suspension contains sulfamethoxazole , trimethoprim, and the following non-medicinal ingredients: purified water , sodium cyclamate, carboxymethylcellulose, microcrystalline cellulose, sorbitol solution, glycerin, polysorbate, amaranth dye, FD&C Yellow 6 and artificial cherry flavour.

Stability and Storage Recommendations

Apo- Sulfatrim Tablets and Suspension should be stored at room temperature between 15° and

30°C and protected from light.

Availability of Dosage Forms

APO-SULFATRIM Tablets: Each round, white tablet, one side convex, scored and engraved APO 400-80, other side flat and plain contains 400 mg sulfamethoxazole USP and 80 mg trimethoprim USP. Available in bottles of 100, 500 and 1000.

APO-SULFATRIM DS Tablets: Each white, capsule-shaped tablet, one side scored and engraved APO DS contains 800 mg sulfamethoxazole USP and 160 mg trimethoprim USP. Available in bottles of 10, 100, 250 and 500.

APO-SULFATRIM Pediatric Tablets: Each round, white, flat-faced with bevelled edge tablet contains 100 mg sulfamethoxazole USP and 20 mg trimethoprim USP. Available in bottles of 100 and 1000.

APO-SULFATRIM Pediatric Suspension: Each 5 mL of pink, cherry flavoured suspension contains 40 mg sulfamethoxazole USP and 8 mg trimethoprim USP in a pH range 5.0-6.5. Available in bottles of 100 mL and 400 mL.

Microbiology

APO-SULFATRIM (sulfamethoxazole and trimethoprim) is bactericidal *in vitro* against the gram-negative and gram-positive organisms listed in Table 3.

In vitro Activity: Trimethoprim is, in general, more active than sulfamethoxazole against most bacterial species (see Table 1). Notable exceptions to this include *Neisseria gonorrhoeae* and *Pseudomonas aeruginosa* (which is, in general, insensitive to these drugs)

Demonstration of Synergy

By testing trimethoprim and sulfamethoxazole, both separately and in combination, synergy can be demonstrated *in vitro*. Synergy is indicated by one or all of the following:

1. by a reduction in the MIC of each drug when the drugs are used in combination
2. by an increase in the size of the zone of inhibition around the combination disc; and
3. by an increase in bactericidal activity when the drugs are used in combination

The reduction in the MIC varies with the ratio of the drugs present and it has been demonstrated that the optimum ratio, as measured by maximum reduction in the MIC's of both drugs, is that in which the drugs are present in proportions corresponding to their respective MIC when acting singly. It should be emphasized, however, that potentiation occurs over a wide range of ratios. With an excess of one of the drugs, the proportion of the other drug may be markedly reduced below that of the optimum ratio, yet still produce a synergistic effect.

Table 1

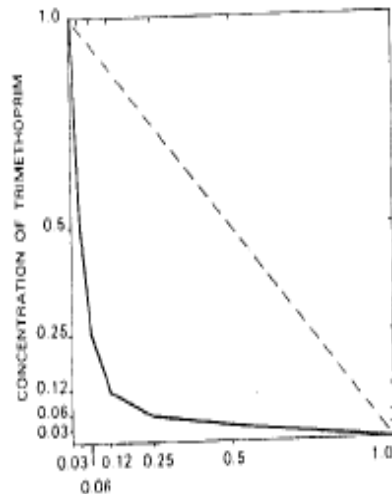
COMPARISON OF ACTIVITY OF TRIMETHOPRIM AND SULFAMETHOXAZOLE **IN VITRO**

	MIC ($\mu\text{g/mL}$)	
	Trimethoprim	Sulfamethoxazole
<i>Streptococcus pyogenes</i>	0.4	100 (\pm 25)
<i>Diplococcus pneumoniae</i> Type II	1	32 (\pm 16)
<i>Viridans streptococci</i>	0.25	8
<i>Streptococcus faecalis</i>	0.5	100
<i>Streptococcus agalactiae</i>	4	50
<i>Staphylococcus aureus</i>	0.2	4
<i>Erysipelothrix rhusiopathiae</i>	8	>100
<i>Corynebacterium pyogenes</i>	0.4	>100
<i>Corynebacterium diphtheriae</i>	0.4	>100
<i>Clostridium perfringens</i>	50	16 (\pm 8)
<i>Mycobacterium tuberculosis</i>	250	>1000
<i>Nocardia asteroides</i>	10	5
<i>Escherichia coli</i>	0.2	8
<i>Citrobacter freundii</i>	0.1	3
<i>Klebsiella pneumoniae</i>	0.5	16
<i>Klebsiella rhinoscleromatis</i>	0.5	10
<i>Enterobacter aerogenes</i>	3	>100
<i>Salmonella typhi</i>	0.4	4
<i>Salmonella typhimurium</i>	0.3	10
<i>Shigella</i> spp.	0.4	4
<i>Vibrio comma</i>	0.8	32
<i>Pasteurella septica</i>	0.1	8
<i>Haemophilus influenzae</i>	0.12	>50
<i>Bordetella pertussis</i>	3	100
<i>Moraxella lacunata</i>	4	8 (\pm 2)
<i>Proteus</i> spp.	1	8
<i>Providencia B</i>	1	30
<i>Pseudomonas aeruginosa</i>	>100	25
<i>Pseudomonas pseudomallei</i>	4	10
<i>Neisseria gonorrhoeae</i>	12	1.6
<i>Neisseria meningitidis</i>	8	1.5

The activities were compared in the Wellcome Nutrient Agar containing 5% lysed horse blood. For *Neisseria* and *Haemophilus* spp., the medium was heated at 80°C for 5 minutes and in the case of *Mycobacterium tuberculosis*, Peizer and Schacter medium was used.

Figure 2

CONCENTRATION OF SULFAMETHOXAZOLE



CONCENTRATION OF SULFAMETHOXAZOLE: Isobologram showing the synergy existing between trimethoprim and sulfamethoxazole. Concentrations required to produce 50% inhibition of bacterial growth.

Because of the wide variation in sensitivities of organisms to trimethoprim and sulfamethoxazole, the optimum ratio is also variable and could be different for each organism. Since, in general, trimethoprim is about 20 to 100 times more active than sulfamethoxazole, when examining strains for enhanced susceptibility to the combination investigators have generally preferred to use a fixed ratio, choosing one near the modal optimum. The 1:20 ratio is used most frequently, and examples of the increase in activity are shown in Table 2.

Table 2 EFFECT ON MIC OF COMBINING 1 PART OF TRIMETHOPRIM WITH 20 PARTS OF SULFAMETHOXAZOLE				
Organism	MIC µg/mL			
	Sulfamethoxazole		Trimethoprim	
	Alone	Mixture	Alone	Mixture
<i>Streptococcus pyogenes</i>	>100	1.0	1.0	0.050
<i>Diplococcus pneumoniae</i>	30	2.0	2.0	0.100
<i>Staphylococcus aureus</i>	3	0.3	1.0	0.015
<i>Haemophilus influenzae</i>	10	0.3	1.0	0.015
<i>Bordetella pertussis</i>	50	4.0	3.0	0.200
<i>Klebsiella pneumoniae</i>	>100	4.0	1.0	0.200
<i>Klebsiella aerogenes</i>	>100	4.0	1.0	0.200
<i>Escherichia coli</i>	3	1.0	0.3	0.050
<i>Salmonella typhimurium</i>	10	1.0	0.3	0.050
<i>Shigella sonnei</i>	10	1.0	0.3	0.050
<i>Proteus vulgaris</i>	30	3.0	3.0	0.150
<i>Neisseria gonorrhoeae</i>	27	1.0	14.4	0.540

Table 3 shows the consolidated reported incidence of sensitivity of 49 165 strains of 40 species to trimethoprim plus sulfamethoxazole from 28 studies. A standard sensitivity disc containing 1.25 µg trimethoprim and 23.75 µg sulfamethoxazole was used in each study, but the medium varied.

Effect of Sulfamethoxazole Resistance: (49)

A group of 449 clinical isolates were arbitrarily divided into two groups based on their respective sensitivities to sulfamethoxazole: resistant, MIC \geq , 100 ug/mL, and sensitive, MIC < 100 ug/mL. These organisms were then tested against various concentrations of a fixed ratio of sulfamethoxazole:trimethoprim (16:1). Table 3 shows that the addition of trimethoprim significantly

reduced the concentration of sulfamethoxazole required to inhibit most of the resistant organisms tested (except for *Pseudomonas*)

Table 3

INCIDENCE OF SENSITIVITY TO TRIMETHOPRIM + SULFAMETHOXAZOLE

Species	Total No. of Strains	Sensitive Strains	
		Total	%
<i>S. aureus</i>	4 929	4 280	86.8
<i>S. epidermidis</i>	99	83	83.8
<i>D. pneumoniae</i>	140	140	100.0
<i>St. Pyogenes</i>	757	699	92.3
<i>St. viridans</i>	873	803	91.9
<i>Streptococci</i>	191	102	53.4
<i>St. agalactiae</i>	20	20	100.0
<i>Enterococci</i>	7 394	3 798	51.4
<i>Escherichia coli</i>	18 903	16 851	89.1
<i>Klebsiella</i>	1 365	1 109	81.2
<i>K. pneumoniae</i>	12	12	100.0
<i>Proteus spp.</i>	3 142	2 436	77.5
<i>Pr. vulgaris</i>	610	402	65.9
<i>Pr. mirabilis</i>	2 730	2 337	85.6
<i>Pr. morgani</i>	183	160	87.4
	498	431	86.5
<i>Pr. rettgeri</i>			
<i>Providence A</i>	133	104	78.2
<i>Klebs.-Enterobacter</i>	670	458	68.4
<i>Kl. edwardsii</i>	2	2	100.0
<i>Enterobacter</i>	1 344	1 169	86.9
<i>Ent. cloacae</i>	193	187	96.9
<i>Salmonella</i>	594	586	98.6
<i>Hafnia</i>	92	82	89.1
<i>Shigella</i>	226	222	98.2

<i>Sh. dysenteriae</i>	12	8	66.7
<i>Ps. aeruginosa</i>	3 081	600	19.5
<i>Ps. pseudomallei</i>	12	6	50.0
<i>Citrobacter</i>	202	184	91.1
<i>Serratia</i>	28	26	92.9
<i>Paracolibacterium</i>	84	59	70.2
<i>Haemophilus influenzae</i>	284	218	76.8
<i>Flavobacterium</i>	2	2	100.0
<i>Achromobacter</i>	160	124	77.5
<i>Arizona sp.</i>	18	10	55.6
<i>Alcaligenes sp.</i>	150	127	84.7
<i>AD group</i>	4	4	100.0
<i>Cory. diphtheriae</i>	2	2	100.0
<i>Acinetobacter</i>	16	15	93.7
<i>Aeromonas</i>	4	4	100.0
<i>Neisseria Meningitidis</i>	6	6	100.0
<i>Neisseria gonorrhoeae</i>	32	31	97.0

The resistance of *Bacteroides* spp. and *Lactobacilli* is of special interest, for they comprise the major portion of the flora of the gut. Trimethoprim plus sulfamethoxazole given daily for 10 days to 12 adult volunteers, eliminated all members of the *Enterobacteriaceae* family from the feces but did not affect either of the former bacterial groups. This lack of effect of these major groups probably accounts for the infrequent occurrence of intestinal upsets during therapy with APO-SULFATRIM.

Trimethoprim and Sulfonamide-Resistant Strains

The theoretical basis for the synergistic effect of APO-SULFATRIM is that sulfamethoxazole reduces the amount of dihydrofolate synthesized by the infecting organism (usually causing

bacteriostasis), and an additional small amount of trimethoprim produces a complete block in the conversion of the folate to its active form (usually causing bacterial death).

When examined by conventional susceptibility methods, an organism is regarded as resistant to sulfonamides when its macroscopic growth is not affected. "Resistance" by this definition does not necessarily mean that the sulfonamide has not reduced the folate biosynthesis of the organism. There is indirect enzymatic evidence that the dihydrofolate content of such sulfonamide-resistant strains is, in fact, reduced in the presence of sulfonamides, although not to the same extent as that of sulfonamide-sensitive strains. Therefore, in the presence of sulfamethoxazole, the effect of trimethoprim on these sulfonamide-resistant strains should be increased because the amount of substrate against which the trimethoprim competes is reduced. *Streptococcus faecalis* is often regarded as being indifferent to the presence of sulfonamides, yet the susceptibility of this organism (and of sulfonamide-resistant strains of *Escherichia coli*) can be shown to be enhanced markedly with the addition of trimethoprim. Perhaps even more convincing evidence can be obtained by the diffusion method.

Although sulfonamide sensitivity discs produce no zones of inhibition with *Streptococcus faecalis*, discs containing 23.75 µg sulfamethoxazole plus 1.25 µg trimethoprim produce larger zones of inhibited growth of *Streptococcus faecalis* than do discs containing 1.25 µg trimethoprim. The difference in size is abolished when para-aminobenzoic acid is present.

Reversal of Trimethoprim Activity

Trimethoprim acts by interfering with the conversion of dihydrofolic acid to tetrahydrofolic acid. Therefore, the presence of an exogenous source of the latter should, theoretically, diminish or even abolish the antibacterial activity of APO-SULFATRIM in the host.

In vitro, 1 µg/mL folinic acid affects only the sensitivities of *Streptococcus faecalis*, an organism known to utilize exogenous folates. *In vivo*, when administered subcutaneously to mice infected with *Diplococcus pneumoniae*, *Streptococcus pyogenes*, *Escherichia coli*, *Proteus vulgaris*, *Salmonella schottmuelleri* and *Salmonella typhimurium*, folinic acid does not affect the ability of trimethoprim to potentiate the antibacterial activity of sulfamethoxazole.

The *in vitro* interference with the action of trimethoprim and the sulfonamides by thymidine also raises the question of whether thymidine could affect *in vivo* activity. Experimental studies in the hamster indicate that thymidine is degraded rapidly *in vivo*. In experiments in mice where large doses of the nucleoside were given intraperitoneally, it did not interfere with the protection afforded by trimethoprim and sulfamethoxazole against *Proteus vulgaris*.

Resistance Development

During the serial passage in the presence of trimethoprim, little change in sensitivity occurs with light inocula; however, resistance develops rapidly with heavy inocula. With sulfonamide-sensitive strains, the emergence of these mutants is markedly delayed by the presence of sulfamethoxazole. The delaying effect of the sulfonamide depends, however, on the degree of sulfonamide resistance and is minimal with highly resistant strains.

Recently, R factors conferring high degrees of trimethoprim resistance have been identified in members of the *Enterobacteriaceae* family isolated from man and animals. A factor conferring high trimethoprim and sulfonamide resistance was detected in a strain of *Escherichia coli* and in a strain of *Klebsiella aerogenes*. Both strains were isolated from infected urine of human patients.

PHARMACOLOGY

The pharmacokinetic profiles of sulfamethoxazole and trimethoprim remain the same whether they are administered in combination or alone. Peak blood levels for both compounds occur one to four hours after oral administration. Detectable amounts are still present after 24 hours. The biological half-lives reported are 9-11 hours for sulfamethoxazole (26,39,50,51) and 10-14 hours for trimethoprim (26,50,51)

Serum binding (26)

In serum, the degree of protein-binding by trimethoprim varies with the concentration, but it normally is about 44% bound to plasma protein. Sulfamethoxazole was found to be about 70% bound to plasma protein. Addition of sulfamethoxazole reduced the binding of trimethoprim by 3 to 4%, but there was no change in the protein-binding of sulfamethoxazole at therapeutically attainable concentrations of the two drugs (37,38).

Absorption

Both trimethoprim and sulfamethoxazole are rapidly absorbed following oral administration. Detectable levels of both drugs appear in the blood in about five minutes with significant levels being reached within an hour. Peak blood levels for both compounds are attained usually in two to four hours, are maintained for about seven hours, and detectable amounts are still present after 24 hours. When the two drugs are administered together, the individual blood levels are similar to those achieved when the drugs are administered separately, thus indicating no effect in absorption of one drug by the other.

Distribution

The ratio of one part trimethoprim to five parts sulfamethoxazole achieves drug concentrations in the blood in the ratio of approximately 1:20, a ratio considered to be optimal against a wide range of bacteria. Unlike sulfamethoxazole, trimethoprim concentrates in tissues; biopsy material from a small number of patients taking trimethoprim preoperatively indicated that the concentration of trimethoprim in the tissues exceeded that of the plasma sampled at the same time - most significant in the lung (by 10 times). A similar pattern occurs in animals. Levels of trimethoprim in the sputum were also found to be higher than in the plasma following oral administration of trimethoprim-sulfamethoxazole. The concentrations of both drugs have also been found to be well-maintained in lymph and tissue fluids.

In serum, the degree of protein-binding by trimethoprim varies with the concentration, but it normally is about 44% bound to plasma protein. Sulfamethoxazole was found to be about 70% bound to plasma protein. Addition of sulfamethoxazole reduced the binding of trimethoprim by 3 to 4%, but there was no change in the protein-binding of sulfamethoxazole (about 66%) at therapeutically attainable concentrations of the two drugs.

Metabolism and Excretion

Studies conducted on the individual components administered separately, indicate that in the presence of a high fluid intake, approximately 50%, and in the presence of a low fluid intake, approximately 40% of the orally ingested trimethoprim is excreted unchanged in the urine within 24 hours. Approximately 10% of the excreted drug is in the form of metabolites with little or no antibacterial activity. Some trimethoprim is excreted in the bile, where concentrations twice those of plasma are obtained, but as it is almost completely reabsorbed; very little appears in the feces.

Studies with radio-labelled trimethoprim indicated that it is almost completely absorbed following oral administration in man; less than 4% of the radioactivity appeared in the feces over a period of six days. Radioactivity was eliminated from the plasma and urine at almost identical rates; almost all of an oral dose being excreted in the urine within 48 hours. The biological half-life of trimethoprim was calculated to be 10 hours (range of 6.2 to 12 hours in four patients), which corresponds well to the half-life of 9 to 11 hours determined in man for sulfamethoxazole.

About 60% of the orally ingested sulfamethoxazole is excreted in the urine within 48 hours. Of the excreted drug, approximately half is the N⁴ acetylated derivative, a fifth is the N⁴ conjugate, a sixth is the unchanged parent compound, and about a tenth is another N⁴ free compound.

Although the amount of each drug excreted is similar when given separately or in combination, the method of excretion by the kidney is quite different. Sharpstone demonstrated that there is net tubular reabsorption of filtered sulfamethoxazole, at least in patients with normal renal function, whereas with trimethoprim there is a tubular secretory mechanism of excretion in patients with normal or impaired renal function.

Renal clearance of sulfamethoxazole increased with rising urine flow-rate, was independent of urine pH when this was less than 7, but increased with alkalinization of the urine above a pH of 7. The clearance of trimethoprim was unaffected by alteration in urine flow-rate but increased sharply with falling urine pH.

In patients with impaired renal function, sulfamethoxazole excretion was only slightly decreased, whereas trimethoprim excretion decreased markedly in severe renal impairment.

Comparative Bioavailability Studies

Single-dose, standard two-way crossover bioavailability studies were performed using normal human volunteers.

.A) The rate and extent of absorption of sulfamethoxazole and trimethoprim after a single oral dose of 800 mg of sulfamethoxazole and 160 mg of trimethoprim given as either one Bactrim 800-160 mg tablet or as one Apo-Sulfatrim 800-160 mg tablet was measured and compared. The results can be summarized as follows: (36)

Sul famethoxazole	Bactrim (SD*)	Apo-Sulfatrim (SD)	%Diffr
AUC 0-71 (mcg-hr/mL)	636.0 (94.8)	606.0 (79.6)	- 4.7
Cmax (mcg/mL)	47.4 (6.9)	42.4 (4.2)	-10.6
Tmax (hr)	1.6 (0.9)	2.6 (1.7)	+66.7
t 1/2 (hr)	9.1 (0.7)	8.8 (0.8) - 3.3	- 3.3

Trimethoprim	Bactrim (SD)	Apo-Sulfatrim (SD)	%Diffr
AUC 0-71 (mcg-hr/mL)	24.51 (5.10)	24.31 (4.57)	-0.8
Cmax (mcg/mL)	1.47 (0.24)	1.49 (0.17)	+ 1.5
Tmax (hr)	1.7 (1.1)	1.7 (1.3)	+3.3
t 1/2 (hr)	10.3 (1.7)	10.1 (1.7)	- 1.9

* SD = Standard Deviation

B) The rate and extent of absorption of sulfamethoxazole and trimethoprim after a single oral dose of 800 mg of sulfamethoxazole and 160 mg of trimethoprim given as either 20 mL of Bactrim Suspension (200-40 mg/5 mL) or as 20 mL of Apo-Sulfatrim Pediatric Suspension (200-40 mg/5 mL) was measured and compared. The results can be summarized as follows:

Sul famethoxazole	Bactrim (SD*)	Apo-Sulfatrim (SD)	%Diffr
AUC 0-47 (mcg-hr/mL)	561.9 (62.1)	562.4 (71.7)	+0.1
Cmax (mcg/mL)	44.0 (5.2)	43.5 (5.9)	-1.2
Tmax (hr)	1.8 (1.5)	2.2 (1.2)	+19.0
t 1/2 (hr)	8.8 (1.2)	8.8 (1.2)	+ 0.0

Trimethoprim	Bactrim (SD*)	Apo-Sulfatrim (SD)	%Diffr
AUC 0-47 (mcg-hr/mL)	18.72 (3.48)	18.32 (3.72)	-2.1
Cmax (mcg/mL)	1.35 (0.19)	1.31 (0.19)	-3.1
Tmax (hr)	1.7 (0.8)	2.2 (0.8)	+29.6
t 1/2 (hr)	8.7 (1.2)	9.1 (1.7)	+ 4.6

* SD = Standard Deviation

TOXICOLGY

Acute Studies

Acute toxicity studies in rats of the separate components and of trimethoprim and sulfamethoxazole combined in a ratio of 1:5 demonstrated the following LD₅₀ values:

	Sulfamethoxazole	Trimethoprim	1:5
Rats (Adult) oral	2000 mg/kg	1500 mg/kg	6500 mg/kg
Rats (Neonates) oral	1360 mg/kg	195 mg/kg	1160 mg/kg

Subacute Studies

Daily dosages of 33, 100, and 300 mg/kg of trimethoprim and 133, 400, and 1200 mg/kg of sulfamethoxazole were given to young, sexually immature rhesus monkeys for one month. The compounds were also given in combination; the lower doses of each being combined, and similarly the higher ones. Effects on weight gain were seen. Loss in weight was noted with high and medium dosage groups with the combined drugs. Changes were induced in hemopoiesis which were consistent with trimethoprim action in interfering with dihydrofolate reductase activity. Also high doses of the sulfonamide produce hypoplastic hemopoietic changes. Half the animals on high dose levels showed increased blood urea concentrations.

A similar study in rats produced similar results. In addition, some changes associated with the sulfonamide were noted in the thyroid and in the pituitary, such as increased weight and epithelial changes. Fatty changes were also seen in the liver of monkeys and rats on the medium and high dose levels.

Chronic Studies

Six Months

Toxicity studies of six months duration were conducted in rats and monkeys with a combination of trimethoprim and sulfamethoxazole (1:2 ratio) with total daily oral doses ranging between 99 and 900 mg/kg.

Doses of 99 mg/kg daily for six months were well-tolerated in both species with minimal signs of toxicity; 300 mg/kg was well-tolerated by monkeys, but in rats impaired growth was seen and 2 of the 10 animals in this dosage group died. With 900 mg/kg, marked effects on growth and on survival occurred in both species.

Histopathological examinations were made on more than 20 different tissues from each species; these showed depression of hematopoiesis in both species in the 300 and 900 mg/kg dosage groups and minor changes with 99 mg/kg. These bone marrow changes were related to trimethoprim's interference with dihydrofolate reductase activity. Other tissue changes attributed to drug action seen in the rat, but not in the monkey, were thyroid hyperplasia and pituitary cytological effects, both associated with the sulfonamide moiety.

12-14 Months

Oral toxicity studies with trimethoprim and sulfamethoxazole, singly or in a 1:5 combination, were conducted in the monkey and in the rat. For the monkey, dose levels ranging from 10 + 50 to 60 + 300 mg/kg six days per week were employed for a period of 52 weeks; for the rat, dose levels

ranging from 5 + 25 to 120 + 600 mg/kg per day were employed for a duration of 60 weeks.

In the monkey, the 1:5 combination did not produce any significant compound-related effects, except for a slight reduction in weight gain in the 60 + 300 mg/kg dose group.

In the rat study, thyroid hyperplasia of a dose-related severity was seen after 13 weeks in all animals receiving sulfamethoxazole. This hyperplasia progressed to nodularity or adenoma formation in some rats after 52 weeks at doses as low as 50 mg/kg per day, and to local vascular invasion and lung metastases after 60 weeks at doses as low as 150 mg/kg per day. Pituitary changes (large pale cells, often vacuolated), considered to be secondary to the thyroid change, were found in a few rats in all the sulfamethoxazole treated groups.

The phenomenon of thyroid hyperplasia in rats has been produced in this species by a number of sulfonamides and antithyroid drugs. The thyroid hyperplasia which occurs under the influence of these drugs is considered to be compensatory to the failure of thyroid hormone synthesis; it has been stated that this hyperplasia can be prevented or reversed by thyroid hormone. The progression of thyroid hyperplasia to nodule or adenoma formation is an observation in rats which has been reported previously in the literature on the antithyroid drugs, thiouracil and thiourea. It is considered that in these studies the production of thyroid tumours was due, not to any direct carcinogenic action of the drugs, but rather to the excessive and prolonged stimulation of the thyroid epithelium by the thyrotropic secretion of the pituitary.

Other changes associated with sulfamethoxazole treatment in our animal studies were: a dose-related increased alkaline phosphatase, a dose-related reduction in mean body weight gain, slight depression of hematopoiesis, testicular atrophy, focal renal calcification, and slightly increased fat vacuolation of the liver and kidney.

Human Tolerance Studies

Chronic Tolerance and Toxicity Study

A double-blind, placebo-controlled trial designed to study human tolerance and possible toxic effects of an orally administered 1:5 trimethoprim/sulfamethoxazole combination, was completed in 36 normal healthy men for 13 weeks. At the two dose levels investigated (80 + 400 and 160 + 800 mg/kg three times daily) the drug appeared to be well-tolerated, with only a few minor, easily reversible side-effects occurring. The trial had to be stopped in two subjects due to recurrent black tongue.

Thyroid Function Study

Thyroid function tests (protein-bound iodine and serum cholesterol determinations) were conducted in 25 patients who received two to four APO-SULFATRIM Tablets daily for a duration of 35 to 760 days. In none of these patients was there evidence of depression of thyroid function. One patient showed a diffused stroma of the thyroid and an increased¹³¹I uptake, and another patient had a small diffused goiter after 120 days of treatment.

Reproduction and Teratology

A three-phase investigation, comprised of a fertility and general reproductive performance study and a perinatal and postnatal study in the rat, and teratology studies in the rat and rabbit, were conducted with an orally administered 1:5 combination of trimethoprim to sulfamethoxazole.

The dose levels investigated, singly or combined, were 70 + 350, 30 + 150, 15 + 75, 0 + 350, 0 + 150, 0 + 75, and 14 + 0 or 70 + 0 mg/kg.

Some drug-related effects noted in the investigation were: a reduced body weight gain by eight weeks in males in the Fertility and General Reproductive Performance Study at dose levels of 150 or 350 mg/kg of sulfamethoxazole, alone or in combination, and an increased incidence of maternal mortality in the rabbit teratology study at the same dose levels. In one of the 18 litters of the high combination group, four of the eight pups were abnormal. Two had bone malformations and two had curled tails, missing or small kidneys, absence of eyelid and one also had misshapen lateral ventricles of the brain. The instances of small, underdeveloped kidneys were such as to raise a question of dose relationships. In the teratogenicity study in rats, instances of small, underdeveloped kidneys were seen: in control group - 0; in combination groups (420 mg/kg dose) - 6 (8.5%), (180 mg/kg dose) - 3 (4.7%), (90 mg/kg dose) - 2 (3.2%). Other malformations noted in a group receiving 420 mg/kg, were one instance of incomplete nasal septum and two fetuses with abnormally large openings in the lateral ventricles. Fertility and general reproductive performance, and early and late fetal development were not affected by the dose regimen employed.

Fertility

In these studies, the animals were dosed per os with a 1:5 mixture of trimethoprim to sulfamethoxazole daily from 60 days before mating until the end of weaning.

In the rat, at 600 mg/kg there was a slight, non-significant lowering of the pregnancy rate when compared with controls. The number of live progeny per litter at birth and at weaning was less than in controls. A slight treatment-related disturbance of estrus and of sperm count was also noted.

With 200 mg/kg the pregnancy rate was slightly lower than in controls, but the other effects seen with the higher dose were not noted.

In the rabbit, daily oral doses of 600 mg/kg produced vomiting, even with divided doses, and was therefore abandoned. Two hundred mg/kg did not have a significant effect on the pregnancy rate, on the number of live births per litter, or on the mean weight of progeny at birth or at weaning.

Teratogenicity

In these studies, rats and rabbits were dosed by stomach tube daily from days 8 to 16 of pregnancy, or on a single day of pregnancy (rat only). Trimethoprim and sulfamethoxazole were used alone, in a 1:4 combination, and in a 1:2 combination.

For the rat, dosing with 500 mg/kg of trimethoprim on any single day of gestation between days 8 to 16 had no effect on the dams or their fetuses. A single dose of 2000 mg/kg of trimethoprim was lethal to most fetuses when given on the eighth or ninth day, and it produced a very high incidence of malformations when given on days 10, 11 or 12. However, the incidence of these malformations dropped off precipitately when dosing was on the 13th day or later.

The most common abnormality seen with either compound in the rat, when dosing was daily on days 8 to 16 of pregnancy, was cleft palate which occurred with 200 mg/kg of trimethoprim alone and with 640 mg/kg of sulfamethoxazole alone. Higher doses of trimethoprim produced bony defects and exencephaly, related to its action in interfering with dihydrofolate reductase activity. The abnormalities could be prevented by the administration of folic acid subcutaneously. No fetal abnormalities were found at daily doses of 160 mg/kg or less of trimethoprim, or 512 mg/kg or less of sulfamethoxazole. Using compounds in a 1:4 trimethoprim/ sulfamethoxazole

combination, fetal malformations appeared at between 128 mg/kg and 160 mg/kg of trimethoprim and 512 mg/kg and 640 mg/kg of sulfamethoxazole. There appeared to be a distinct synergism with the 1 to 2 mixture.

In rabbits given the drug daily during organogenesis (days 8 to 16), no teratogenic effect was revealed with the 1:4 mixture or its components. While no important effect on the incidence of dead fetuses was noted with daily doses of 125 mg/kg of trimethoprim, 500 mg/kg or less of sulfamethoxazole, or with 312.5 mg/kg of the combination, the incidence of fetuses dying before full term was higher than for controls in the groups given trimethoprim except at the 62.5 mg/kg dose. Pregnant does tolerated the combination better than sulfamethoxazole alone.

BIBLIOGRAPHY

1. Astwood E.,B ., Sullivan, I., Bissell, A, and Tyslowitz, R.: Action of Certain Sulfonamides and of Thiourea upon the Function of the Thyroid Gland of the Rat. Endocrinology, 32: 210-225, 1943.
2. Bagdon, R.E.: Experimental Pharmacology and Toxicology of Sulfonamides. Experimental Chemotherapy, 2: 249, 1964.
3. Baciewicz AM, Swafford WB. Hypoglycemia induced by the interaction of chlorpropamide and co-trimoxazole. Drug Intel Clin Pharm, 18: 309-310, 1984.
4. Banzas TM, Mouzet MT, Clegg P. [Clinical test of the combination trimethoprim-sulphamethoxazol in pediatrics]. Prensa Med Argent 1970; 57(24):1202-1208.
5. Barbosa W, Pitaluga Vasconcelos WM. Açào da sulfametoxazol associada ao trimetoprim na terapeutica da blastomicose Sul-Americana. Rev Pat Trop 1973; 2:329-339.
6. Beumer, H.M. : Double-Bl ind Trial with Sulfamethoxazole plus Trimethoprim (Bactrim) versus Demethyl -chlortetracycl i ne (Ledermyci n) in Chronic Respiratory Tract Infections. Respiration, -29: 257-269, 1972
7. Bharija SC, Belhaj MS. Fixed drug eruption due to cotrimoxazole. Australas J Dermatol 1989; 30(1):43-44.
8. Bioavailability Study. On file at Apotex Inc., 1987.
9. Bohni , E. : Chemotherapeutic Activity of the Combination of Trimethoprim and sulfamethoxazole in Infections of Mice. Postgrad. Med. J.,45: 18, 1969.
10. Brathwaite AR, Gordon CC, MacDougal JR. Trimethoprim/sulfamethoxazole (SEPTRA) in penicillin-resistant male urethritis. Manuscript(on file at Burroughs Wellcome Inc.).
11. Brumfitt, W. Faiers, M.C., Pursell, R. E., Reeves, D.S., and Turnbull, A.R. : Bacteriological and Cl i nical Studies with Trimethoprim Sul fonamide Combinations, with Particular Reference to the Treatment of Urinary Infections. Postgrad. Med- J., 45: 1969.
12. Bunger, P., Diller W, Fuhr, J., and Kruger-Theimer, E.: Vergleichende Untersuchungen and neueren Sulfanilamiden. 1. Mitteilung. Arzneimittel Forschung, 1961; 11:247.

13. Burchall, J.J. and Hitchings, G.H.: Inhibitor Binding Analysis of Dihydrofolate Reductases from Various Species. Molec. Pharmacol. , 1: 126-136, 1965.
14. Bushby S.R.M.: Combined Antibacterial action in Vitro of Trimethoprim and Sulfonamides: The In Vitro Nature of Synergy. Postgrad. Med. J., 45: 10, 1969.
15. Bushby, S.R.M. and Hitchings, G.H.: Trimethoprim, A Sulfonamide Potentiator. Brit. J. Pharmacol. Chemother. , 33: 72-90, 1968.
16. Bushby, S.R.M.: The Effects of Sulfonamides on the emergence of Trimethoprim-Variants. Proc. 7th. Int. Congr. Chemother., 1: 847-848, 1971.
17. Bushby SRM, Barnett M. unpublished 1972. 16 Caprillif F. Report of a clinical trial with Bactrim in the treatment of gonorrhoea. Manuscript(on file at Burroughs Wellcome Inc.)
18. Carbajal BH. Treatment of chronic osteomyelitis with Bactrim and the ambulatory method, in Advances in Antimicrobial and Antineoplastic Chemotherapy. Hejzlar M et al (eds), Munich Urban and Schwarzenberg 1972; 1:1127-1128.
19. Cash RA, Northrup RS, Mizanur Rahman AS. Trimethoprim and sulfamethoxazole in clinical cholera: comparison with tetracycline. J Infect Dis 1973; 128(suppl 53).
20. Chrysanthakis C. The combination of trimethoprim-sulphamethoxazole in the treatment of chronic osteomyelitis. Orthopaedic Chron Asklipiion Hosp HRC 1970; 20(2):1-7.
21. Cox CE, Montgomery WG. Combined trimethoprim-sulfisoxazole therapy of urinary infections. Clinical studies. Postgrad Med J 1969; 45(suppl 71).
22. Craven JL, Pugsley DJ, Blowers R. Trimethoprim-sulphamethoxazole in acute osteomyelitis due to penicillin-resistant staphylococci in Uganda. Br Med J 1970; 3(716):201-203.
23. Crichton. E.P. and McDonnell, C.E.: The Combination of Trimethoprim and Sulfamethoxazole in the treatment of Urinary Tract Infection. Can. Med. Ass. J. , 107: 292-295, 1972.
24. Csonka, G.W. and Knight, G.J.: Therapeutic Trial of Trimethoprim as a Potentiator of Sulfonamides in Gonorrhoea. Brit. J. Ven. Dis., 43: 161, 1967.
25. de Pourbaix F, Pourbaix-Collignon AMD, Raynal L, d' Inverno E. [Clinical and bacteriological test in urinary infection of trimethoprim

- combined with sulfamethoxazole]. *Rev Med Liege* 1969; 24(22):800-802
26. Daikos GK, Papapolyzos N, Marketos N, Mochlas S, Kastanakis S, Papasteriadis E. Trimethoprim-sulfamethoxazole in brucellosis. *J Infect Dis* 1973; 128(suppl 3).
 27. Das JKL, Lall RLP. Effect of co-trimoxazole in renal failure. *Ind Med J*, 79: 70-72, 1985.
 28. Darrell, J.H., Garrod, L.P., and Waterworth, P.M.: Trimethoprim: Laboratory and Clinical Studies. *J. Clin. Path.*, 21: 202-209, 1968.
 29. Drew, C.D.M., Hughes, D.T.D., and Jenkins, G.C.: Long Term Treatment of Chest Infections with a Combination of Trimethoprim and Sulfonamide: The Clinical, Bacteriological and Haematological Effects. 5th Int. Congr. Chemother., Vienna, 3: 107, 1967.
 30. Evans RA, Benson RE. Complicated nocardiosis successfully treated with trimethoprim and sulphamethoxazole. *Med J Aust* 1971; 1(13):684-685.
 31. Farid Z, Sparks HA, Hassan A. Treatment of Salmonella paratyphi A osteomyelitis with trimethoprim-sulphamethoxazole. *J Trop Med Hyg* 1973; 76(4):91-93.
 32. Fleming, M. P., Datta, N., and Gruneberg, R. N. : Trimethoprim Resistance Determined by R Factors. *Brit. Med. J.*, 1: 726-728, 1972
 33. Fowle AS. National use of trimethoprim and sulphamethoxazole for one year--problems and solutions. *S Afr Med J* 1970; 44(suppl 32):15-20.
 35. Garrod, L.P.: Clinical Applications of Trimethoprim-Sulfamethoxazole: Achievements and Prospects. *S. Afr. Med. J.*, 4-4: 12, 1970
 36. Gentry, A. and Morse, P.A.: Partial Reversal of the Thymineless State In Vivo. *Nature*, 212: 1483-1484, 1966.
 37. Gharagozloo RA, Naficy K, Mouin M, Nassirzadeh MH, Yalda R. Comparative trial of tetracycline, chloramphenicol, and trimethoprim-sulphamethoxazole in eradication of *Vibrio cholerae* El Tor. *Br Med J* 1970; 4(730):281-282.
 38. Gibbons RB, Lindauer JA. Successful treatment of *Pneumocystis carinii* pneumonia with trimethoprim - sulfamethoxazole in hypersensitive AIDS patients. *JAMA*, 253: 1259-1260, 1985.
 39. Gillman MA, Sandyk R. Phenytoin toxicity and co-trimoxazole. *Ann Intern Med*, 102: 559, 1985.

40. Gotz, H. and Hantschke, D.: Klinische Erfahrungen mit Ro 6-2580 in der Dermatologie. Chemotherapy, 14: 57-65, 1969.
41. Grunberg, E., Prince, H.N. and De Lorenzo, W.F.: The In Vivo Effect of Folinic Acid (Citrovorum Factor) on the potentiation of the Antibacterial Activity of Sulfisoxazole by Trimethoprim. J. Clin. Pharmacol., -10: 231-234, 1970.
42. Gutman LT. The use of trimethoprim - sulfamethoxazole in children: a review of adverse reactions and indications. Pediatr Infect Dis, 3: 349-357, 1984.
43. Hall, P.W.: Renal Secretory Time for Sulphonamide. Clin. Res., 9: 248, 1961.
44. Hassan A, Erian MM, Farid Z, Hathout SD, Sorensen K. Trimethoprim-sulfamethoxazole in acute brucellosis. Br Med J 1971; 3(767):159-160.
45. Higgins, GM. A consideration of the physiologic action of thiouracil and other goitrogens. Minn Med 1944;997-1001.
46. Hoffman La Roche: Bactrim Product Monograph. 1987.
47. Hughes, D.T.D., Drew, D.C.M., Johnson, B.W., and Jarvis, J.D.: Trimethoprim and Sulfamethoxazole in the Treatment of Chronic Chest Infections. Chemotherapy, 14: 151-157, 1969.
48. Hughes, D.T.D.: Treatment of Exacerbations of Chronic Chest Infections with Combinations of Sulfamethoxazole- Trimethoprim. Postgrad. Med. J.,45: 86-88, 1969.
49. Hughes, W.T., Feldman, S., and Sanyal, S.K.: Treatment of Pneumocystis carinii Pneumonitis with Trimethoprim-Sulfamethoxazole. Can. Med. Assoc. J., 122: 47-50, 1975.
50. Hughes WT, Feldman S, Chandhary S. Comparison of trimethoprim-sulfamethoxazole (TMP-SMX) and pentamidine (PNT) in the treatments of Pneumocystis carinii pneumonitis. Pediatr Res.
51. Hughes WT. Trimethoprim - sulfamethoxazole therapy for Pneumocystis carinii pneumonitis in children. Rev Infect Dis, 4: 602-607, 1982
52. Jaffe HS, et al. Complications of co-trimoxazole in treatment of AIDS-associated Pneumocystis carinii pneumonia in homosexual men. Lancet, 1109-1111, 1983
53. Japan Cooperative Bacteriological Study Group for Co-Trimazole: Analysis of Vitro Antibacterial Activities of the Combination of Trimethoprim and

- Sulfamethoxazole on Clinical Isolates in Japan. The J. of Inf. Diseases, 128: S502, 1973.
54. Jewkes, R.F., Edwards, M.S. and Grant, B.J.B.: Haematological Changes in a Patient on Long Term Treatment with a Trimethoprim-Sulfaemthoxazole Combination. Postgrad. Med- J., 46: 723-726, 1970.
 55. Jenkins, G.C., Hughes, D.T.D., and Hall, P.C.: A Haematological Study of Patients Receiving Long Term Treatment with Trimethoprim and Sulfonamide. J. Clin. Path., -23: 392-396, 1970.
 56. Jick H. Adverse reactions to trimethoprim - sul famethoxazole in hospitalized patients. Rev Infect Dis, 4: 426-428, 1982.
 57. Kalowski, S., Nanra, R.S., Mathew, T.H., and Kincaid-Smith, P.: Deterioration in Renal Function in Association with Co-trimoxazole Therapy. Lancet: 394-397, 1973.
 58. Kamat, S.A. : Further Studies with Trimethoprim/Sulfamethoxazole in the Treatment of Acute Systemic Salmonel l o s i s (Enteric Fever). Read a t Int . Congr. Chemother., Tokyo, August 10-15, 1969.
 59. Kaplan, S.A., Weinfeld, R.E., Abruzzo, C.W., McFaden, K., Jack, M. L., and Weissman, L. : Pharmacokinetic Profile of Trimethoprim-Sulfamethoxazole in Man. J. Infect . Dis., 128: S547, 1973
 59. Lal S, Modawal KK, Fowle AS, Peach B, Popham RD. Acute brucellosis treated with trimethoprim and sulphamethoxazole. Br Med J 1970; 1(717):256-257
 60. Langlois, Y., Melancon, J., and Tetreault, L.: Association Trimethoprim-Sulfaméthoxazole dans l'infection Urinaire à Coliformes. L'Union Med. du Can ., 102: 395-399, 1973.
 61. Laqueur, G.L.: Nodular Hyperplasia of Thyroid Glands Induced by Thiouracil. Cancer Res., 9: 247-255, 1949.
 62. Lexomboon, U., Mansuwan, P., Duangmani, C., Benjadol, P., and McMinn, M.T.: Clinical Evaluation of Co-trimoxazole and Furazolidone in Treatment of Shigellosis in Children. Brit. Med. J., 3: 23-26, 1972.
 63. Ludwig E, et al.. Pharmacokinetics of the sulphamethaxazole - trimethoprim combination in geriatric patients . Infection , 10: 315-316, 1982.
 64. Lykkegaard NM, Laursen H, Stroyer I. Short-term treatment of urinary tract infection with trimethoprim sulfamethomaxazole - a clinical and bacteriological study. Scand J Infect Dis 1970; 2:211-214.
 65. Mallett, E. and Musselwhite, D.: The Use of 'Septrin' in the Treatment of

- Upper Respiratory Tract Infections. The Practitioner, 205: 807-811, 1970.
66. Meyer, HA. Efficacité thérapeutique du Bactrim dans le traitement du typhus, du paratyphus et d'autres salmonelloses. Ars Medici 1973; 28:113-119.
 67. McGuinness, B. W. : A Combination of Trimethoprim and Sulfamethoxazole in Upper Respiratory Infection. Postgrad. Med. J., 45: 99, 1969.
 68. Money, W.L. and Rawson, R.W.: The Experimental Production of Thyroid Tumors in the Rat Exposed to Prolonged Treatment with Thiouracil. Cancer, 3: 321-335, 1950.
 69. Naff H. [Changes in the intestinal flora induced in man by Bactrim]. Pathol Microbiol (Basel) 1971; 37(1):1-22.
 70. Nunn PP, Allistone JC. Resistance to trimethoprim-sulfamethoxazole in the treatment of Pneumocystis carinii pneumonia. Implications of folinic acid. Chest, 86: 149-150, 1984.
 71. Pato ML, Brown GM. Mechanisms of resistance of Escherichia Coli to Sulfonamides. Arch Biochem Biophys 1963; 103:443-448.
 72. Pavillard ER. Treatment of nocardial infection with trimethoprim-sulphamethoxazole. Med J Aust 1973; 1(suppl 2):65-69.
 73. Perazella MA. Trimethoprim-induced hyperkalaemia: clinical data, mechanism, prevention and management. Drug Saf. 2000; 22(3):227-36.
 74. Pines A, Greenfield JS, Raafat H, Rahman M, Siddiqui AM. Preliminary experience with trimethoprim and sulphamethoxazole in the treatment of purulent chronic bronchitis. Postgrad Med J 1969; 45(suppl 90).
 75. Purves, H.D. and Griesbach, W.E.: Studies on Experimental Goitre. VII : Thyroid Carcinomata in Rats Treated with Thiourea. Brit. J. Exp. Path., 27: 294-297, 1946.
 76. Purves, H.D. and Griesbach, W.E.: Studies on Experimental Goitre. VIII : Thyroid Tumors in Rats Treated with Thiourea. Brit. J. Exp. Path., 28: 46-53, 1947.
 77. Pugsley, D.J. Mwanje, L., Pearson, C., and Blowers, R.: Use of Trimethoprim and Sulfaemthoxazole in Tropical Africa: Typhoid Fever, Salmonella Typhi Carriage and Staphylococcus Aureus Sepsis. Postgrad. Med. J., 45: 95, 1969.
 78. Roth B, Falco EA, Hitchings GH, Bushby SR. 5-Benzyl-2, 4-Diaminopyrimidines as antibacterial agents. 1. Synthesis and Antibacterial activity *in vitro*. J Med Pharm Chem 1962; 91:1103-1123.

79. Salter AJ. Trimethoprim - sulfamethoxazole in treatment of severe infections. Rev Infect Dis, 4: 338-350, 1982.
80. Sempreviso L, Gamboa R, Silva M, Saitua MT. Treatment with Bactrim of typhoid and paratyphoid fever in children. Proc 6th Int Congr Chemother 1969; 1:794-797
81. Schofield, C.B.S., Masterton, G., Moffett, M., and McGill, M.I.: The Treatment of Gonorrhoea in Women with Sulfamethoxazole-Trimethoprim. Postgrad. Med. J., 45: 81, 1969.
82. Sharpstone, P.: The Renal Handling of Trimethoprim and Sulfamethoxazole in Man. Postgrad. Med. J., 45: 38, 1969.
83. Siber GR, et al. Pharmacokinetics of intravenous trimethoprim - sulfamethoxazole in children and adults with normal and impaired renal function. Rev Infect Dis, 4: 566-578, 1982.
84. Stringer JR, Beard CB, Miller RF, Wakefield AE. A new name (*Pneumocystis jiroveci*) for *Pneumocystis* from humans. Emerg Infect Dis 2002; 8(9):891-896
85. Schwartz, D.E. and Ziegler, W.H.: Assay and Pharmacokinetics of Trimethoprim in Man and Animals. Postgrad Med. J., 45: 32, 1969.
86. Thomas MH, Gutterman LA. Methotrexate toxicity in a patient receiving trimethoprim - sulfamethoxazole. J Rheumatol, 13: 440-441, 1986.
87. Udwardia, T.E., Omar, M.M., and Meisheri, I.U.: Clinical Trial with 'Septrin' (Trimethoprim-Sulfamethoxazole) in Surgical Infections. The Ind. Practitioner, 23: 731-738, 1970.
88. Varoquaux O, et al. Pharmacokinetics of the trimethoprim - sulfamethoxazole combination in the elderly. Br J Clin Pharmacol, 20: 575-581, 1985.
89. Waltzer, P.D., Perl, D.P., Krogstad, D.J., Rawson, P.G., and Schultz, M.G.: Pneumocystis carinii Pneumonia in the United States. Ann. Int. Med., 80: 83-93, 1974.
90. Williams, J.D., Brumfitt, W., Condie, A.P., and Reeves, D.S.: The Treatment of Bacteriuria in Pregnant Women with Sulfamethoxazole and Trimethoprim. Postgrad. Med. J., 45: 71, 1969.
91. Welling, P.G., Craig, Wm. A., Amidon, G.L., and Kunin, C.M.: Pharmacokinetics of Trimethoprim and Sulfamethoxazole in Normal Subjects and in Patients with Renal Failure. J. Infect. Dis., 128: S556, 1973.

92. Wormser GP, et al. Co-trimoxazole (trimethoprim - sulfamethoxazole). An updated review of its anti-bacterial activity and clinical efficacy, Drugs, 24: 459-518, 1982.
93. Septra Injection Product Monograph January 7, 2008